

# INSTALLATION INSTRUCTION

## MIRROR LIGHTS

### TECHNICAL DATA

Model	VT-7012
Watts	13W
Lumens	910LM
Beam Angle	120°
CRI	>80
Body Type	Metal+PMMA
Operation Temperature	-25°C to +50°C
Dimension	640x55x185mm
Input Power	AC:220-240V, 50Hz



### INTRODUCTION & WARRANTY

Thank you for selecting and buying V-TAC product. V-TAC will serve you the best. Please read these instructions carefully before starting the installation and keep this manual handy for future reference. If you have any another query, please contact our dealer or local vendor from whom you have purchased the product. They are trained and ready to serve you at the best. The warranty is valid for 3 years from the date of purchase. The warranty does not apply to damage caused by incorrect installation or abnormal wear and tear. The company gives no warranty against damage to any surface due to incorrect removal and installation of the product. The products are suitable for 10-12 Hours Daily operation. Usage of product for 24 Hours a day would void the warranty. This product is warranted for manufacturing defects only.

### WARNING!

1. Please make sure to turn off the power before starting the installation.
2. Installation should only be done by a certified electrician.
3. The light source of this luminaire is not replaceable, when the light source reaches its end of life the whole luminaire should be replaced.
4. For indoor use only [IP20].

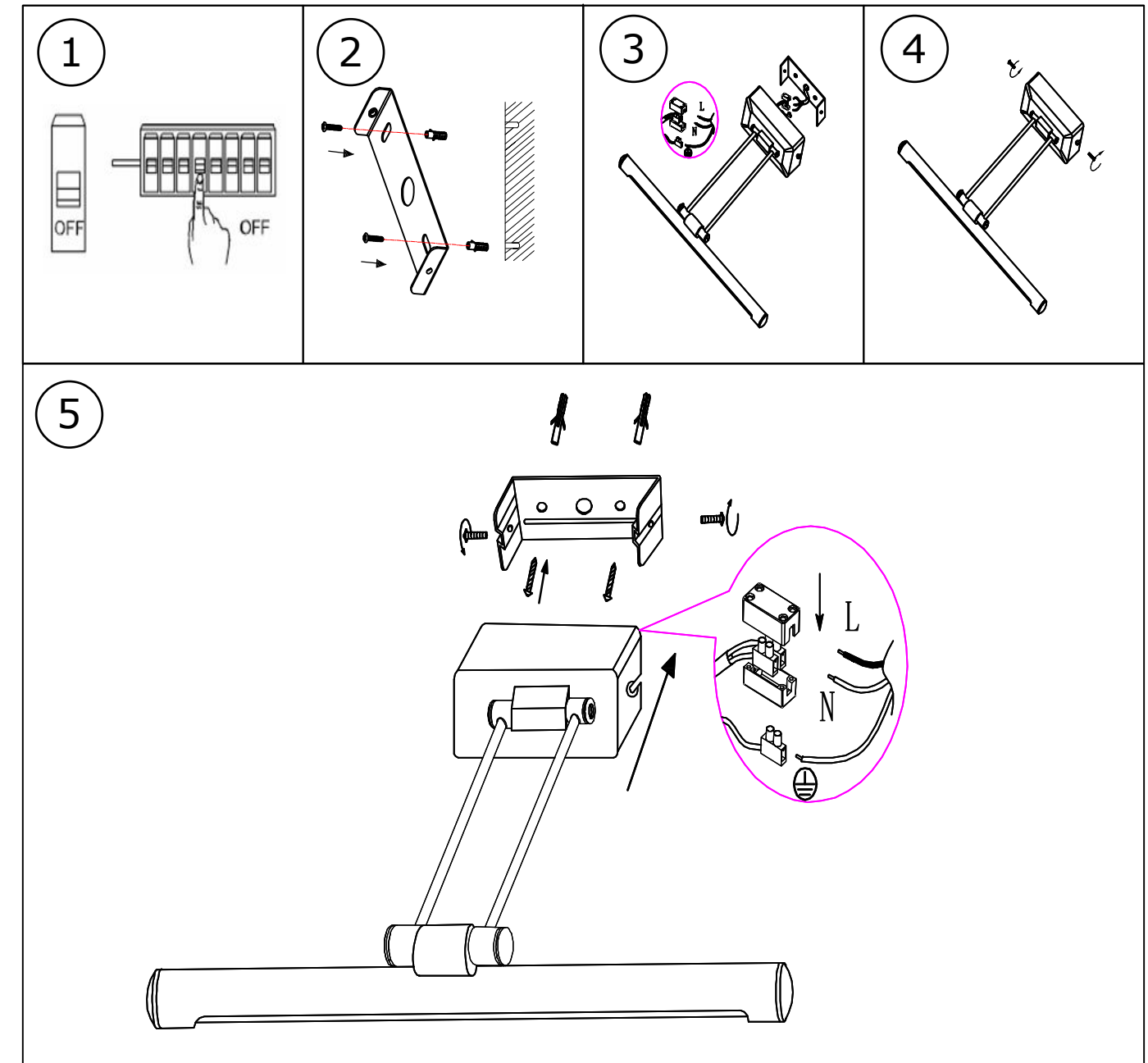


This marking indicates that this product should not be disposed of with other household wastes.



Caution, risk of electric shock.

### INSTALLATION DIAGRAM:



### INSTALLATION INSTRUCTION

- Switch off the power before starting the installation
- Drill the holes in the wall
- Fix the bracket onto the wall
- Connect supply leads with terminal brown (L) to brown, blue (N) to blue and greenish-yellow (⊕) to greenish-yellow
- Install the lamp on the bracket and lock it with screws.
- Switch on the power and test the light.